

Take Back Your File Servers

Jeffery Hicks

The Lonely Administrator

<http://jdhitsolutions.com/blog>

Pre-requisites for this presentation:

- 1) Basic Windows Administration
- 2) Some Windows 2008 Experience

Level: **Intermediate**

Agenda

- The Problem
- The File Server Resource Manager
- File Screens
- Quotas
- Storage Reporting
- Classifications
- File Management Tasks
- Next Steps

The Problem

- Disk space still costs \$\$
- What's on your file servers can cost you:
 - Performance
 - Legal
 - Compliance
- Who has what files?
- What are they?
- How old are they?



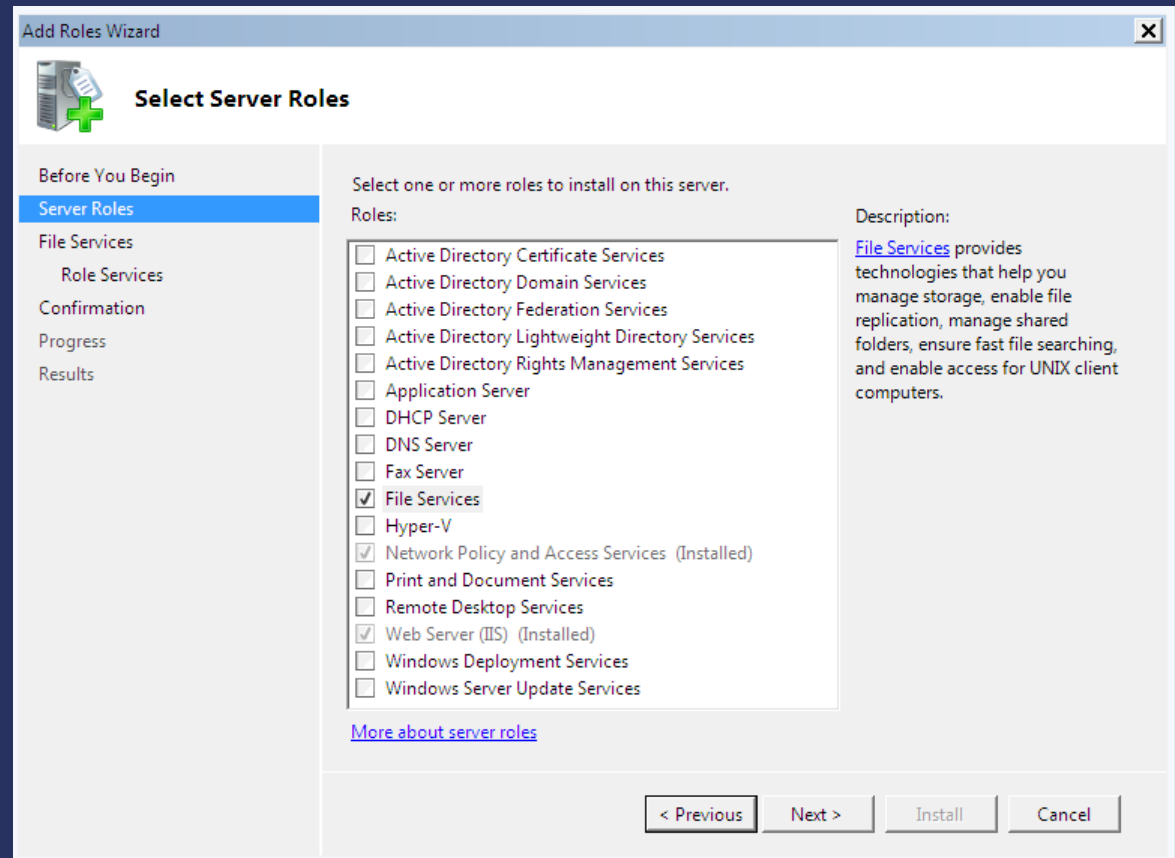
The File Services Role

- Windows Server 2008
- Optional role for File Servers
- Share & Storage Management
- DFS Management
- FRS
- Searching & Indexing
- File Server Resource Manager (FSRM)

Installing FSRM

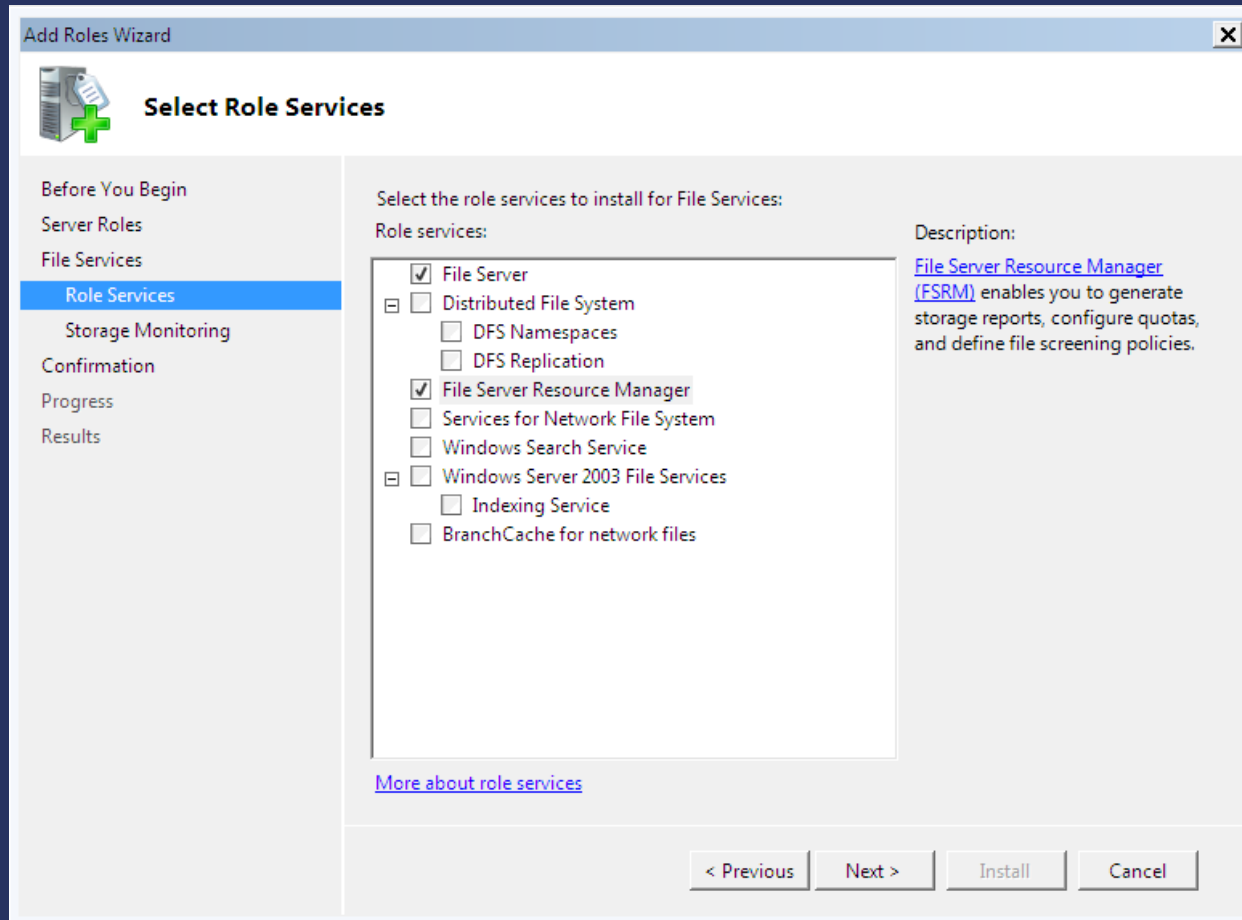


- Requires Windows Server 2008 or 2008 R2
- Use RSAT and Win7
- Install the File Services Role



Installing FSRM

- Add selected services



Configure Monitoring

- Select Volumes to Track

Add Roles Wizard

Configure Storage Usage Monitoring

Before You Begin
Server Roles
File Services
Role Services
Storage Monitoring
Report Options
Confirmation
Progress
Results

You can monitor the amount of space used on each volume on this computer and generate storage reports when a volume reaches a specified usage threshold. A usage threshold is a percentage of the total storage capacity of a volume. First, select the volumes you want to monitor. Then, for each volume, define the usage threshold and choose the reports to generate.

Volumes (NTFS volumes only):

Name	Capacity	Free Space
<input type="checkbox"/> Local Disk (C:)	39.9 GB	24.4 GB
<input checked="" type="checkbox"/> New Volume (E:)	10.0 GB	9.8 GB

Volume monitoring options

Volume capacity: 10.0 GB
Volume usage threshold: 85%

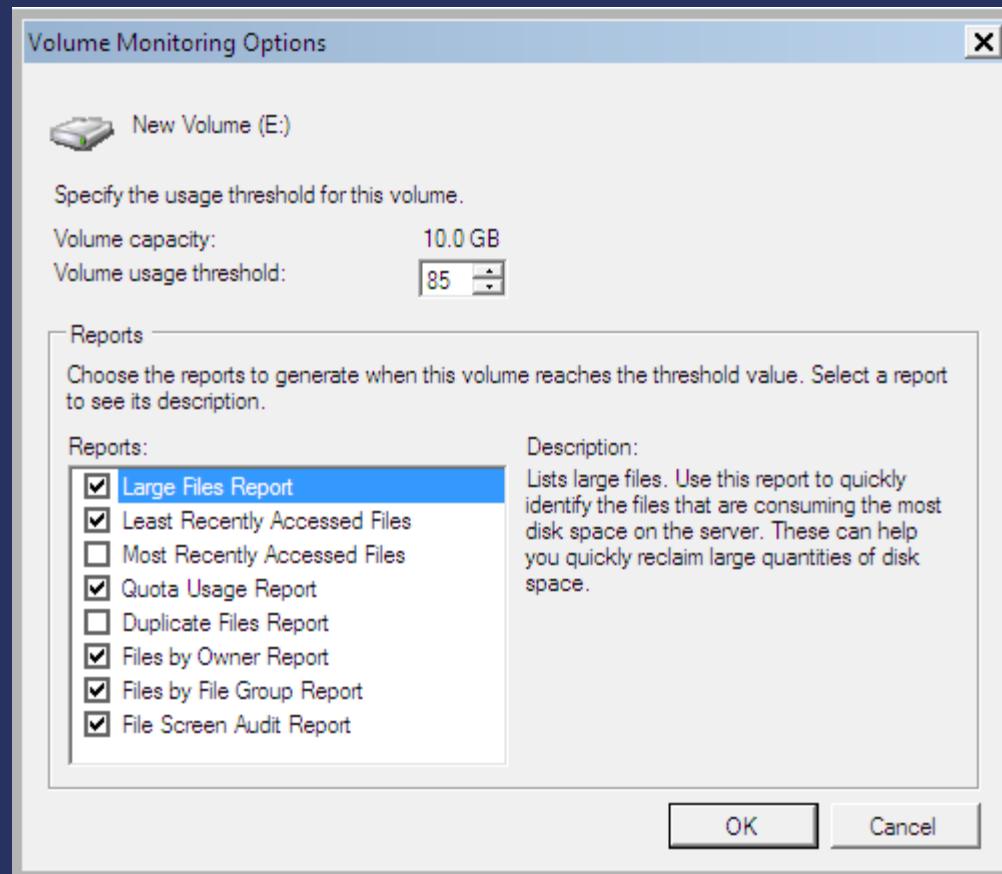
Reports to generate at the threshold:

- Files by Owner Report
- Files by File Group Report

< Previous Next > Install Cancel

Monitoring Options


- Select Reports



Report Options

- File and/or Email

Add Roles Wizard [X]

 **Set Report Options**

Before You Begin
Server Roles
File Services
Role Services
Storage Monitoring
Report Options
Confirmation
Progress
Results

Select a location to save the reports that are generated when volumes reach their threshold values. One report is generated each time a volume reaches its threshold. Old reports will not be overwritten and must be manually deleted. You can also choose to receive each report by e-mail.

Save reports at this location:
C:\StorageReports

Receive reports by e-mail
Reports can be sent to one or more e-mail addresses. Type each e-mail address where you want to receive the reports. Use semicolons (;) to separate multiple addresses.

E-mail addresses:

Format: account@domain

An SMTP server must be used for sending the reports by e-mail. Select the SMTP server to use.

SMTP server:

< Previous Next > Install Cancel

Enable Last Access Time

- HKLM\System\CurrentControlSet\Control\FileSystem
- NtfsDisableLastAccessUpdate
- Set to 0
- Reboot

File Screens

- Grouped by File Type
- Use Templates
- Block or Monitor
- Alerts and email notifications
- One file screen per path

Quotas

- Soft or Hard
- Flexible – Set tough policy on the parent then remove quota or use less restrictive on children
- Usage Reports
- Notifications: Eventlog, User, Admin

Storage Reports

- Variety of canned reports
- Create your own
- Variety of formats
- Scheduled or on demand



File Classification Infrastructure (FCI)



- Categorize files
 - Content
 - Location
- Used in file management tasks
- Assign a property
- Assign a rule
- Classify based on management policy

Classification Property

- Yes/No
- DateTime
- Number
- OrderedList
- String
- Multi-Choice
- Multi-String

Classification Rule



- Rule can apply to multiple volumes\folders
- By Content
 - Search for text
 - Search for patterns
- By Folder
- Rules can be aggregated
- FCI “lives” with the file

File Management Tasks

- Based on classifications
- Move old files
- Create a custom task



Next Steps

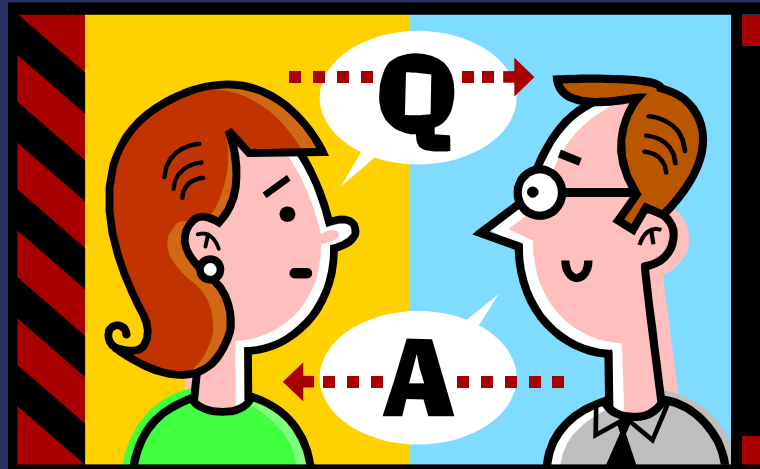
- Install or upgrade to Windows Server 2008/R2
- Define management needs
- Setup lab test
- Communicate with end users & management

Resources

- *Windows Server 2008 Administrators Pocket Consultant* (Stanek)
- *Windows Server 2008 Unleashed* (Morimoto, Noel, et al)
- [Blogs.technet.com/filecab](http://blogs.technet.com/filecab)

Q & A

SECURITY
VIRTUALIZATION
POWERSHELL
SAFEPPOINT



Enjoy the show

SECURITY
VIRTUALIZATION
POWERSHELL
SAFEPOINT

**THANK
YOU!**

<http://jdhitsolutions.com/blog>
jhicks@jdhitsolutions.com